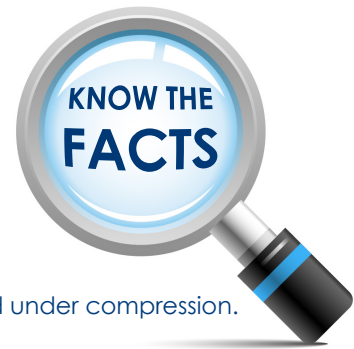


# Eclipse

releasing time to care

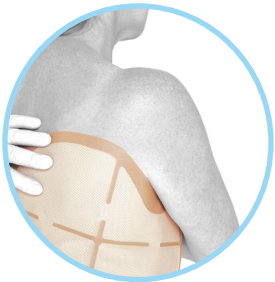


? Eclipse® can't be used under compression false  
Eclipse® is one of the few dressings that has been clinically proven<sup>1</sup> to be able to be safely used under compression.

? KerraMaxCare™ is cheaper than Eclipse® false  
On the most popular sizes the 10 x 10cm KerraMaxCare™ is 77% more expensive and 59% more expensive<sup>2</sup> on the 20 x 30cm. In fact significant cost savings can be made against most of the leading like-for-like competitors (see table on reverse).

? All super absorbent dressings are the same false  
In a recent article, only Eclipse® has been clinically proven to meet all the key performance characteristics (Absorbency, fluid handling, strikethrough and structural integrity) of a super absorbent dressing<sup>3</sup>.

? All super absorbent dressings are tested to the same international quality standard false  
Unfortunately tests are often an adaptation of the recognised ISO standards, meaning these results are effectively worthless, which could be seen as an attempt by manufacturers to make their dressings look better. The Eclipse® range has been independently tested to ISO 13726 series and has been found to outperform competitive dressings<sup>3</sup>.



? Multilayer of super absorbent dressings is good clinical practice false  
In a recent open letter to the Editor of the BJN, Professor of Tissue Viability Richard White states, "Multilayering of superabsorbent polymer dressings has no place in wound care"<sup>4</sup> Also, why use already expensive multiple dressings, when 1 strike-through proof Eclipse® will do the job<sup>5</sup>?

# Eclipse

## super absorbent dressings

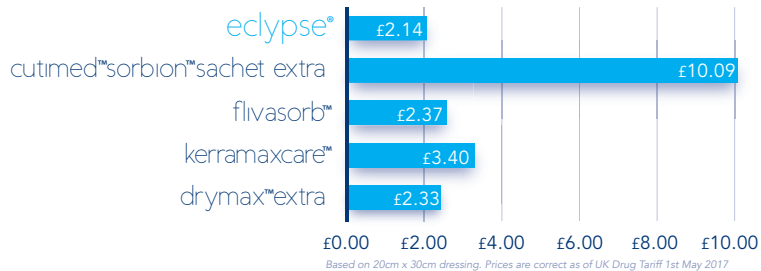


Our range of Eclipse® super absorbent dressings deliver quality performance in the controlled management of exudate. Our recent developments in the Eclipse® range of dressings have seen an increase in the absorbency of our products by 30%, with no impact on cost.



eclipse® can reduce dressing spend and increase patients quality of life, releasing time to care

### how we compare



### ordering information

Product	Stock Code	Size	Pack Size	PIP Code	NHS Code
Eclipse®	CR3818	10cm x 10cm	20	372-1057	EJE029
Super absorbent secondary dressing	CR3769	15cm x 15cm	20	305-1349	EJE032
	CR3743	20cm x 30cm	20	306-1272	EJE030
	CR3808	60cm x 40cm	10	232-1131	EJE034
Eclipse® Adherent	CR3881	10cm x 10cm	10	325-2293	EKH034
Super absorbent dressing with silicone contact layer	CR3883	10cm x 20cm	10	325-2269	EKH011
	CR3863	15cm x 15cm	10	325-2277	EKH036
	CR3864	20cm x 30cm	10	325-2285	EKH015
Eclipse® Adherent Sacral	CR3985	17cm x 19cm	10	348-2213	EME043
Super absorbent sacral dressing with silicone contact layer	CR3986	22cm x 23cm	10	348-2239	EME044
Eclipse® Border	CR4296	15cm x 15cm	10	383-6897	EKH061
Super absorbent dressing with silicone contact layer and border	CR4297	20cm x 30cm	10	383-6905	EKH062
Eclipse® Border Oval	CR4300	10cm x 20cm	10	383-5881	EKH063
Super absorbent dressing with silicone contact layer and border	CR4299	15cm x 20cm	10	383-5899	EKH064
	CR4298	20cm x 30cm	10	383-5907	EKH065
Eclipse® Boot	CR4237	55cm x 47cm	5	380-4630	EJE085
Super absorbent leg wrap dressing	CR4014	60cm x 70cm	5	347-6207	EME042
Eclipse® Foot	CR4219	33cm x 48cm	5	376-5468	EJE086
Super absorbent foot wrap dressing					
Eclipse® Contour	CR4398	30cm x 51cm	10	400-6219	EJE166
Super absorbent multisite dressing					

#### References:

- 1 Cook, L 2011 BJN "Effect of super absorbent dressings on compression sub bandage pressure."
- 2 Prices correct as of Drug Tariff Sep 2016.
- 3 Browning and White JWC Aug 2016 "Comparative evaluation of the functional properties of superabsorbent dressings and their effect on exudate management".
- 4 White R BJN Sep 2015 "Multilayering of superabsorbent polymer dressings has no place in wound care".
- 5 Rafter et al Wounds UK Vol 11 No. 3 2015 "Stopping the strikethrough: An audit of patient outcomes on four superabsorbent dressings".